

STAR FISH FOOD PANTRY

Volume 8/Issue 2

April 2026



BOARD OF DIRECTORS

Patricia Bixel
Executive Director



Michael Townley
Secretary



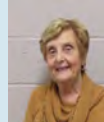
Kathleen Nitzsche
Treasurer



Sarah Mazzaresse
Statistician



Catherine Renga
Holiday Meals



Eelco Swaak
Logistics



Jerry Zukowski
Food change



Avril Lecky
Member



Jason Thomas
Member



Marie Pace, Ex Officio
Board Advisor

OUR MISSION

To provide emergency food assistance to the people of Plainfield who find themselves in need.

MORE DONOR RECOGNITION

As we reported in our last newsletter, we concluded 2025 in good financial shape, thanks to the many generous donations received from our friends in and around the Plainfield Area. We even have donor friends from out-of-state!



2025
DONATIONS

Food, personal care, gift cards, and more...

Equally important were all of the food, personal care, and gift card donations that we received during 2025.

Many individuals and families provided us needed food, as did churches, schools, and other organizations and agencies. Sometimes one person saw our website and started a food drive. At other

times, a family reacted to how we help families when they are hungry.

Whatever the motivation, the families we serve benefit from your on-going generosity of heart and spirit. We could not feed people week in and week out without your kind and caring help. We recognize you and honor you for your support.

Please see the list of donors on the next page. As always, we are not perfect and may have missed someone. If so, it was not intentional and we will be happy to correct any errors in our next newsletter.

*We welcome your comments.
Contact us at
secretary@starfishplainfield.org*

THANKS TO OUR 2025 DONORS OF IN-KIND GIFTS AND GIFT CARDS

Bancroft School, Mountainside
Barbara and Jennifer Lynam
Barbara Stolarz
Bob Joseph
Bob Vyzas
Boy Scouts of America
Bridges, Summit
Bruce & Ruth Ryno
Bruce Zehlne
Cathy Renga
Circle of Friends, Metuchen
Columbia Bank
Community Food Bank of NJ
Covenant United Methodist Church
Crescent Avenue Presbyterian Church, Plainfield
Darlene Bullock
Devanie & Radin Budhan
Edison Intermediate School, Westfield
Elisa and Sophia Rodriguez
Faith Christian Outreach Center, Plainfield
Faith Lutheran Church, New Providence
First United Methodist Church Youth Group
 Scotch Plains
Gina Callan Fawcett
Helen Marino
iHop Restaurant, North Plainfield
Jackie Hicks and Michael Hays
Jacqueline Mandell
Janice and Joseph Vyzas
Jean Trees
Jim Naugle
Jim Schiffer
Joe Encarnacion Family & Food for Thought, Inc.
Karen Calta
Kathleen Nitzsche
Khush Purdit
Lila Reidy
Lillian Bullock
Marsha Walsh
Marsha Young
McGinn Elementary School, Scotch Plains
Meghan Henry
Michael Naftal, Keystone Plastics, So. Plainfield
Michael Ramos Family
Ministry of Motherhood, St. Michael Church, Cranford
Mount St. Mary Academy, Watchung
Neighbors of Sleepy Hollow
Nicole Desai
Netherwood Heights Neighbors Assoc.
New Providence Scouting for Food c/o Tom Montrone
North Plainfield Scouts
Pat Bixel
Pat Jackson
Plainfield Postal Workers Union
PS&S Engineers, Warren
PSE&G New Jersey
Psi Beta Honor Society, Union College
Rosemarie Bonk
Rotary Club of Fanwood-Scotch Plains
Rotary Club of the Plainfields
Saker Family ShopRite Stores
Salt and Light Ministry, St. Michael's Catholic
 Church, Cranford
Scotch Plains-Fanwood Habitat for Humanity
Scotch Plains-Fanwood HS French Club
Sleepy Hollow Neighbors Assoc.
Smurfit Westrock, South Plainfield
Sotheby's Westfield Office
St. Andrew Episcopal Church, New Providence
St. Bartholomew the Apostle Catholic Church,
 Scotch Plains
St. Bernard of Clairvaux & St. Stanislaw Kostka
 Catholic Church, Plainfield
St. John Baptist Church, Scotch Plains
St. Mark Episcopal Church, Plainfield
St. Mary Catholic Church CCD, Plainfield
St. Paul Episcopal Church and Day School, Westfield
Sunrise Senior Living, Scotch Plains
The Holton Center, Metuchen
United Presbyterian Church, Plainfield
Wakefern Food Corporation
Wardlaw Hartridge School, Edison
Watchung Boy Scouts Pack 32
Watchung Hills HS Health Classes
Watchung Hills HS Italian Club
Wilson Memorial Church, Watchung

Anonymous Donors

If we missed your name, please let us know – admin@starfishplainfield.org



WOW!

STAR FISH BENEFITS FROM FOUR SOUP DRIVES

FEBRUARY WAS A “SOUPER” MONTH

We received over 1,000 cans of soup from these generous donors - WOW again!

**CALDWELL BANKER
REALTY**

WILSON CHURCH

**ST. BERNARD
CHURCH PLAINFIELD**

**SCOTCH PLAINS
FANWOOD HS**

Caldwell Banker Realty Rob Lacovara in Westfield collected money from agents and worked with ShopRite Watchung to purchase soup at \$1/can, donating to us at Star Fish! Wilson Church collected soup cans that were counted as votes for which team would win the Super Bowl. Scotch Plains Fanwood High School and St. Bernard’s Church each separately had soup collections to help us re-stock our pantry. February was a “souper” great month!



TOP – Caldwell Banker Realty’s Robert Lacovara brought 800 cans of soup.

SECOND ROW – 547 boxes of cereal from PTA and McGinn Elementary School project (Scotch Plains), one box per student. They were set up domino-style for a fun tip-off in school halls.

THIRD ROW – Soup from Wilson Church in Watchung and diapers and baby care items from First United Methodist Church in Scotch Plains.

LAST PHOTO – Food donation from St. Agnes Church in Clark.

You can see in the smiling faces how much we enjoy receiving your food donations! We are blessed to have such great support from the Plainfield area – thank you all!

2025 Number of Adults, Children and Households Served					Bags of Food Distributed		
	Adults	Children	Total People	Total Households	AGENCIES	PFSP*	Total Bags
January	506	488	994	223	206	116	322
February	221	199	420	104	104	201	305
March	358	272	630	171	201	205	406
April	564	426	990	331	108	318	426
May	502	431	933	197	131	201	332
June	506	446	952	222	108	204	312
July	395	300	695	192	153	145	298
August	517	453	970	230	126	195	321
September	549	538	1,087	276	224	206	430
October	554	508	1,062	268	164	216	380
November	666	646	1,312	298	239	117	392
December	243	181	424	175	195	173	368
Total	5,581	4,888	10,469	2,687	1,959	2,297	4,292
ShopRite Gift Cards					* Plainfield Food Security Project		
Christmas/Winter	166	272	438	118			
Thanksgiving	183	304	487	120			
Easter/Spring	266	217	483	148			
Total Holidays	615	793	1,408	386			
Grand Total	6,196	5,681	11,877	3,073	1,959	2,297	4,292

The chart above shows our total distribution of food items in 2025 when a total of just under twelve thousand people were served. Slightly more than 52% were adults, with a number of the children presenting as infants in need of diapers.

We track the numbers and certain other information to help us assure that your donations, both monetary and food items, are distributed to residents of Plainfield, as we are required to do by our corporate charter. We refer non-residents who reach out to agencies in their own communities.

The numbers for 2025 and initial numbers from 2026 are impacted by the government's enforcement against "illegal" immigrants. We treat all who call through our partner agencies or who walk up to the Plainfield Food Security Project as families in need of food, regardless of their immigration status, which we do not check. When people are hungry, we are there to provide food and encouragement.

ICE and CBP

We are exercising caution at the possible presence of government agents in Plainfield. We will do all that we can to discretely provide food for our families in need.

Donate via check payable to

Star Fish, Inc.

P.O. Box 2822

Plainfield, NJ 07062-0822

E-mail us at:

secretary@starfishplainfield.org

Phone: 908-755-8888

Donate at

www.tinyurl.com/starfishplfdinc

or www.starfishplainfield.org

Click on the *Contact* or *Donate* menu item, and then click on the "Donate" button as shown below.



Or use this QR code



Thank you in advance!

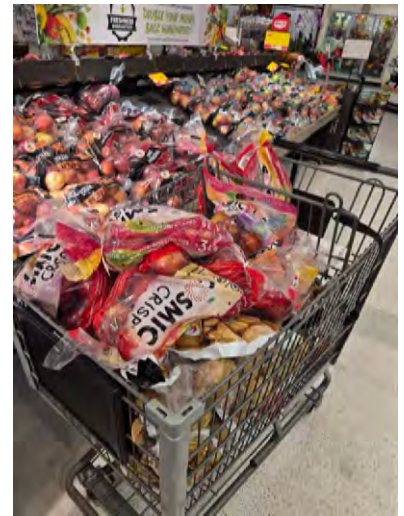
ANOTHER SPECIAL COLLECTION

Nancy Nardi (left photo) is a Lutheran Church minister and member of the Rotary Club of the Plainfields. She learned about Star Fish at Rotary meetings and decided to help us.

Working with Thrivenet, a Lutheran service organization, she obtained a \$250 grant to purchase food.

She and her husband (bottom left photo) worked with Watchung ShopRite to purchase bags of apples, potatoes, and onions.

In fact, ShopRite donated a \$50 gift card to help Nancy buy even more than her \$250 grant would cover. Kudos, all!



We find that our donors often partner with others to help increase the amount of food in their donation.

This is the second donation from Nancy Nardi and Thrivent. We are most grateful!